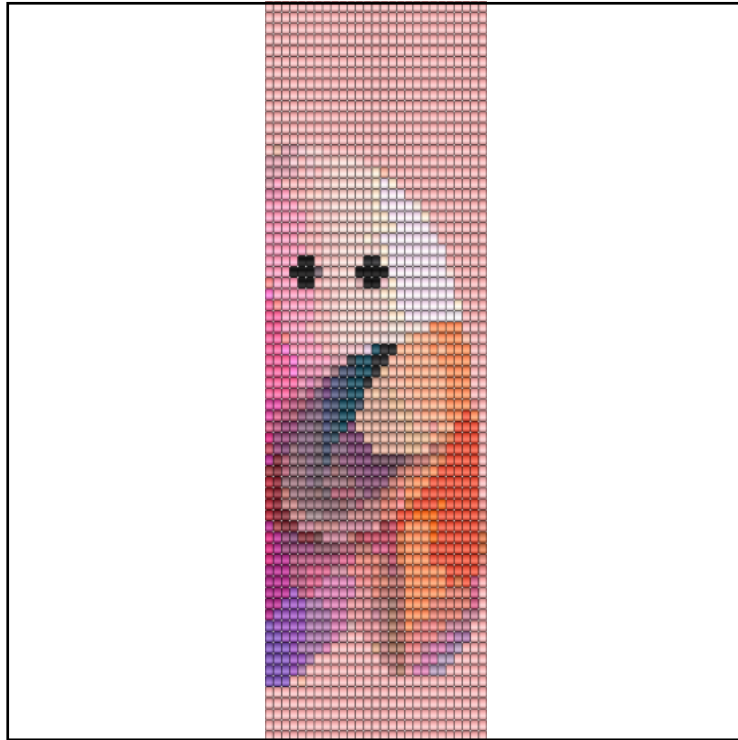


Am I Ghosty



Type: Loom

Width: 27

Height: 67

Finished size: 1.4 x 4.4"

Total beads: 1,809

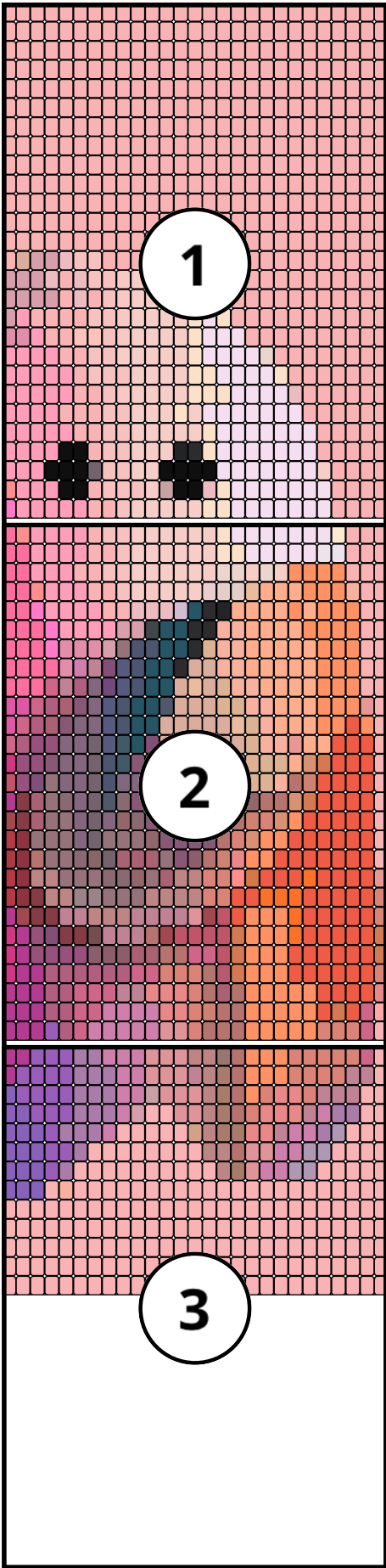
© 2025 The Pixel Zone

thepixelzone.com

Loom Bead Pattern | Personal Use ONLY | NO Selling

28	BA	AZ	BF	BF	BF	BF	BM	B	B	AK	AK	AK	AK	AK	AK	AM	AO	AO	AO	AO	AO	AO	AO	G	BM	BM	BM	28	
29	BA	BA	BF	BF	BF	BF	BM	BM	B	AK	AK	AK	AK	AK	AK	AM	AM	AO	AO	AO	AO	AO	AI	AI	BM	BM	BM	29	
30	BA	BA	BF	BF	BF	BM	BM	B	B	AK	AK	AK	AK	AK	AK	AP	AP	AK	AP	AK	Y	Y	Y	Y	BM	BM	BM	30	
31	BA	BA	AZ	BF	BF	BF	BM	BM	B	AK	AH	AK	AK	AK	AL	AJ	AJ	BK	AY	AY	AY	Y	Y	Y	BL	BM	BM	31	
32	BA	BA	BB	BF	BF	BF	BF	BM	BM	BP	BP	BP	Q	E	AX	C	AY	AY	AY	AY	Y	AY	Y	Y	Y	Y	BM	BM	32
33	BA	BA	BA	BB	BF	BF	BF	BF	AW	AW	BW	E	E	AX	AX	BL	BL	AY	AY	AY	AY	Y	Y	Y	Y	Y	BM	BM	33
▶ 34	BA	BA	BA	BB	AT	AT	AT	AW	U	CD	CD	E	E	AX	Z	BL	BL	AY	AY	AY	AY	AY	Y	Y	Y	Y	BM	BM	◀ 34
35	BA	BA	BA	BA	AT	M	BT	R	BZ	CD	E	E	AX	BC	BC	BL	BL	AY	AY	AY	AY	AY	Y	Y	Y	Y	BM	BM	35
36	BA	BA	BA	CF	BT	BH	X	T	BZ	CD	E	E	BC	BK	BC	Z	BL	BL	AY	AY	AY	AY	Y	Y	Y	Y	BM	BM	36
37	BG	BG	CF	BH	CH	K	BU	BZ	CD	E	E	BV	BC	BC	BC	Z	Z	BL	BL	AY	AY	AY	Y	Y	Y	BO	BM	37	
38	BG	CF	BH	CH	K	BU	X	BZ	CD	E	E	BC	BC	BC	BC	BC	BK	Z	BL	AY	AY	AY	Y	Y	O	Y	BM	38	
39	CF	BH	CC	CC	BU	BU	W	BZ	S	E	R	BC	BC	BC	BC	BC	BC	Z	BL	BL	BO	AY	AY	O	O	O	BM	39	
40	P	CC	CC	K	BU	BU	W	CD	S	K	R	R	BC	BC	BC	BC	BC	Z	Z	Z	AY	BI	BJ	O	O	O	BM	40	
41	AS	CC	R	U	BU	BU	W	CD	X	BU	R	R	R	BC	BC	BC	BC	Z	Z	BL	BR	BD	O	O	O	O	BM	41	
42	AF	BX	CH	U	CA	BU	W	BV	CA	K	K	R	R	CB	CB	CB	CB	AV	BR	BR	BI	BJ	O	O	O	O	BM	42	
43	BY	BX	CH	U	U	BU	W	BU	AV	CA	K	K	R	R	R	CB	BR	BD	AE	BI	Y	O	O	O	O	O	BM	43	
44	CG	BS	U	U	U	BU	W	U	U	U	AV	K	K	K	K	BR	AE	BI	Y	Y	O	O	O	O	O	O	BM	44	
45	H	BS	BR	U	U	CA	V	W	CH	CH	U	K	AC	BR	BD	BN	Y	Y	O	O	O	O	O	O	O	O	BM	45	
46	CG	BS	AR	AR	U	U	U	CA	CA	AV	U	CH	AR	AR	AE	AE	AZ	I	O	O	O	AQ	O	O	O	O	BO	46	
47	CG	BS	BX	AR	AR	CE	CE	U	U	U	AR	AR	AR	AR	AE	AE	O	O	AQ	AQ	AQ	O	O	O	O	O	AE	47	
48	AF	BY	BX	BX	BT	BT	AR	AR	AR	BT	BT	BT	BT	BQ	BY	AS	O	Y	Y	Y	AQ	O	O	O	O	O	AE	48	
49	P	AF	CC	R	BX	BX	D	BT	BT	BT	BR	BY	AS	AS	AS	AS	BJ	Y	Y	Y	AQ	O	O	O	O	O	BJ	49	
50	P	AF	CC	CC	CC	CC	AC	AC	AC	CH	CH	BR	BR	CF	CF	AS	BJ	Y	Y	Y	O	O	O	O	O	O	BJ	50	
51	P	AF	AF	BH	BH	BH	BH	BH	BH	CF	CF	AE	AE	AE	BR	AU	BJ	Y	Y	Y	O	O	O	O	O	O	AE	51	
52	AF	AF	AF	BH	BH	CF	CF	CF	BT	BT	BN	BN	BN	AE	BR	CH	BR	Y	Y	Y	Y	Y	O	O	O	O	BN	52	
53	AF	AF	AF	BH	BH	CF	CF	M	M	M	M	M	BN	BN	AE	BD	BR	BR	Y	Y	Y	Y	Y	O	BJ	O	CF	BE	53
54	AF	AF	AF	AG	BH	CF	M	M	M	M	M	M	BQ	BQ	AE	BR	BR	BR	Y	Y	Y	Y	Y	AE	AE	AE	CF	BM	54

55	AF	AF	AG	AG	AG	AD	AD	M	M	M	BQ	BQ	BQ	AR	AR	N	BR	Y	Y	Y	AE	AE	AE	AE	AE	AE	CF	BM	55
56	AF	AG	AG	AG	AG	AD	AD	AD	M	M	BQ	BQ	BQ	BT	AR	F	BR	Y	Y	Y	AE	AE	AE	AE	BT	BT	BM	56	
57	J	AG	AG	AG	AG	AD	AD	AD	M	M	AB	BQ	BQ	BQ	AR	F	BR	Y	AE	BN	BN	AE	BT	BT	BT	BM	BM	57	
58	J	J	AG	AG	AG	AD	AD	AD	M	AW	BM	BM	BQ	BQ	AR	F	BR	AE	BN	BN	BN	BT	M	AD	AD	BM	BM	58	
59	J	J	J	AG	AD	AD	AD	M	BM	BM	BM	BM	BM	AA	AR	F	F	BN	BN	BT	M	M	AD	L	BM	BM	BM	59	
60	J	J	J	AG	AG	AD	BM	BM	BM	BM	BM	BM	BM	BM	AR	AR	BR	BQ	BQ	M	M	L	L	BM	BM	BM	BM	60	
61	J	J	J	AG	AD	BM	BM	BM	BM	BM	BM	BM	BM	BM	AR	F	BQ	M	M	L	L	BM	BM	BM	BM	BM	BM	61	
62	J	J	J	BM	BL	BM	BM	BM	BM	BM	BM	BM	BM	BM	BM	BM	BM	BM	BM	BM	BM	BM	BM	BM	BM	BM	BM	BM	62
63	BM	BM	BM	BM	BM	BM	BM	BM	BM	BM	BM	BM	BM	BM	BM	BM	BM	BM	BM	BM	BM	BM	BM	BM	BM	BM	BM	BM	63
64	BM	BM	BM	BM	BM	BM	BM	BM	BM	BM	BM	BM	BM	BM	BM	BM	BM	BM	BM	BM	BM	BM	BM	BM	BM	BM	BM	BM	64
65	BM	BM	BM	BM	BM	BM	BM	BM	BM	BM	BM	BM	BM	BM	BM	BM	BM	BM	BM	BM	BM	BM	BM	BM	BM	BM	BM	BM	65
66	BM	BM	BM	BM	BM	BM	BM	BM	BM	BM	BM	BM	BM	BM	BM	BM	BM	BM	BM	BM	BM	BM	BM	BM	BM	BM	BM	BM	66
67	BM	BM	BM	BM	BM	BM	BM	BM	BM	BM	BM	BM	BM	BM	BM	BM	BM	BM	BM	BM	BM	BM	BM	BM	BM	BM	BM	BM	67



Word Chart

Starting bead: Top Right

Row 1 (L) (27)BM

Row 2 (L) (27)BM

Row 3 (L) (27)BM

Row 4 (L) (27)BM

Row 5 (L) (27)BM

Row 6 (L) (27)BM

Row 7 (L) (27)BM

Row 8 (L) (27)BM

Row 9 (L) (27)BM

Row 10 (L) (27)BM

Row 11 (L) (27)BM

Row 12 (L) (27)BM

Row 13 (L) (27)BM

Row 14 (L) (20)BM, (2)B, (1)BP, (2)AW, (1)BC, (1)BM

Row 15 (L) (15)BM, (1)B, (2)AK, (1)AH, (2)B, (1)BP, (1)BM, (1)BP, (3)AW

Row 16 (L) (12)BM, (1)BL, (1)AM, (4)AK, (1)AH, (1)B, (1)BM, (1)BP, (1)BM, (4)AW

Row 17 (L) (11)BM, (1)AM, (1)AO, (1)AM, (4)AK, (1)AH, (2)B, (4)BM, (1)BF, (1)AW

Row 18 (L) (10)BM, (3)AO, (1)AM, (4)AK, (1)AH, (1)B, (2)AN, (2)BM, (1)BF, (2)AT

Row 19 (L) (8)BM, (1)AP, (4)AO, (1)AM, (5)AK, (2)B, (2)BM, (4)BF

Row 20 (L) (7)BM, (1)AM, (4)AO, (2)AM, (4)AK, (3)B, (1)BM, (5)BF

Row 21 (L) (6)BM, (1)BP, (4)AO, (3)AM, (4)AK, (1)AH, (1)B, (2)BM, (5)BF

Row 22 (L) (6)BM, (7)AO, (1)AK, (1)AM, (3)AK, (2)B, (3)BM, (4)BF

Row 23 (L) (5)BM, (7)AO, (1)AM, (5)AK, (2)B, (2)BM, (5)BF

Row 24 (L) (5)BM, (7)AO, (1)AM, (1)AX, (1)C, (3)AK, (2)B, (1)BM, (2)A, (4)BF

Row 25 (L) (4)BM, (1)AK, (7)AO, (4)A, (2)AK, (2)B, (1)W, (3)A, (3)BF

Row 26 (L) (4)BM, (7)AO, (1)AM, (1)BP, (2)A, (1)AB, (1)AK, (3)B, (1)BM, (2)A, (3)BF, (1)AZ

Row 27 (L) (4)BM, (7)AO, (2)AM, (5)AK, (1)B, (2)BM, (5)BF, (1)BB

Row 28 (L) (3)BM, (1)G, (7)AO, (1)AM, (6)AK, (2)B, (1)BM, (4)BF, (1)AZ, (1)BA

Row 29 (L) (3)BM, (2)AI, (5)AO, (2)AM, (6)AK, (1)B, (2)BM, (4)BF, (2)BA

Row 30 (L) (3)BM, (4)Y, (1)AK, (1)AP, (1)AK, (2)AP, (6)AK, (2)B, (2)BM, (3)BF, (2)BA

Row 31 (L) (2)BM, (1)BL, (3)Y, (3)AY, (1)BK, (2)AJ, (1)AL, (3)AK, (1)AH, (1)AK, (1)B, (2)BM, (3)BF, (1)AZ, (2)BA

Row 32 (L) (2)BM, (3)Y, (1)AY, (1)Y, (4)AY, (1)C, (1)AX, (1)E, (1)Q, (3)BP, (2)BM, (4)BF, (1)BB, (2)BA

Row 33 (L) (2)BM, (4)Y, (4)AY, (2)BL, (2)AX, (2)E, (1)BW, (2)AW, (4)BF, (1)BB, (3)BA

Row 34 (L) (2)BM, (3)Y, (5)AY, (2)BL, (1)Z, (1)AX, (2)E, (2)CD, (1)U, (1)AW, (3)AT, (1)BB, (3)BA

Row 35 (L) (2)BM, (3)Y, (5)AY, (2)BL, (2)BC, (1)AX, (2)E, (1)CD, (1)BZ, (1)R, (1)BT, (1)M, (1)AT, (4)BA

Row 36 (L) (2)BM, (3)Y, (4)AY, (2)BL, (1)Z, (1)BC, (1)BK, (1)BC, (2)E, (1)CD, (1)BZ, (1)T, (1)X, (1)BH, (1)BT, (1)CF, (3)BA

Row 37 (L) (1)BM, (1)BO, (3)Y, (3)AY, (2)BL, (2)Z, (3)BC, (1)BV, (2)E, (1)CD, (1)BZ, (1)BU, (1)K, (1)CH, (1)BH, (1)CF, (2)BG

Row 38 (L) (1)BM, (1)Y, (1)O, (2)Y, (3)AY, (1)BL, (1)Z, (1)BK, (5)BC, (2)E, (1)CD, (1)BZ, (1)X, (1)BU, (1)K, (1)CH, (1)BH, (1)CF, (1)BG

Row 39 (L) (1)BM, (3)O, (2)AY, (1)BO, (2)BL, (1)Z, (6)BC, (1)R, (1)E, (1)S, (1)BZ, (1)W, (2)BU, (2)CC, (1)BH, (1)CF

Row 40 (L) (1)BM, (3)O, (1)BJ, (1)BI, (1)AY, (3)Z, (5)BC, (2)R, (1)K, (1)S, (1)CD, (1)W, (2)BU, (1)K, (2)CC, (1)P

Row 41 (L) (1)BM, (4)O, (1)BD, (1)BR, (1)BL, (2)Z, (4)BC, (3)R, (1)BU, (1)X, (1)CD, (1)W, (2)BU, (1)U, (1)R, (1)CC, (1)AS

Row 42 (L) (1)BM, (4)O, (1)BJ, (1)BI, (2)BR, (1)AV, (4)CB, (2)R, (2)K, (1)CA, (1)BV, (1)W, (1)BU, (1)CA, (1)U, (1)CH, (1)BX, (1)AF

Row 43 (L) (1)BM, (5)O, (1)Y, (1)BI, (1)AE, (1)BD, (1)BR, (1)CB, (3)R, (2)K, (1)CA, (1)AV, (1)BU, (1)W, (1)BU, (2)U, (1)CH, (1)BX, (1)BY

Row 44 (L) (1)BM, (6)O, (2)Y, (1)BI, (1)AE, (1)BR, (4)K, (1)AV, (3)U, (1)W, (1)BU, (3)U, (1)BS, (1)CG

Row 45 (L) (1)BM, (7)O, (2)Y, (1)BN, (1)BD, (1)BR, (1)AC, (1)K, (1)U, (3)CH, (1)W, (1)V, (1)CA, (2)U, (1)BR, (1)BS, (1)H

Row 46 (L) (1)BO, (4)O, (1)AQ, (3)O, (1)I, (1)AZ, (2)AE, (2)AR, (1)CH, (1)U, (1)AV, (2)CA, (3)U, (2)AR, (1)BS, (1)CG

Row 47 (L) (1)AE, (5)O, (3)AQ, (2)O, (2)AE, (4)AR, (3)U, (2)CE, (2)AR, (1)BX, (1)BS, (1)CG

Row 48 (L) (1)AE, (5)O, (1)AQ, (3)Y, (1)O, (1)AS, (1)BY, (1)BQ, (4)BT, (3)AR, (2)BT, (2)BX, (1)BY, (1)AF

Row 49 (L) (1)BJ, (5)O, (1)AQ, (3)Y, (1)BJ, (4)AS, (1)BY, (1)BR, (3)BT, (1)D, (2)BX, (1)R, (1)CC, (1)AF, (1)P

Row 50 (L) (1)BJ, (6)O, (3)Y, (1)BJ, (1)AS, (2)CF, (2)BR, (2)CH, (3)AC, (4)CC, (1)AF, (1)P

Row 51 (L) (1)AE, (6)O, (3)Y, (1)BJ, (1)AU, (1)BR, (3)AE, (2)CF, (6)BH, (2)AF, (1)P

Row 52 (L) (1)BN, (4)O, (5)Y, (1)BR, (1)CH, (1)BR, (1)AE, (3)BN, (2)BT, (3)CF, (2)BH, (3)AF

Row 53 (L) (1)BE, (1)CF, (1)O, (1)BJ, (1)O, (5)Y, (2)BR, (1)BD, (1)AE, (2)BN, (4)M, (2)CF, (2)BH, (3)AF

Row 54 (L) (1)BM, (1)CF, (3)AE, (5)Y, (3)BR, (1)AE, (2)BQ, (5)M, (1)CF, (1)BH, (1)AG, (3)AF

Row 55 (L) (1)BM, (1)CF, (5)AE, (3)Y, (1)BR, (1)N, (2)AR, (3)BQ, (3)M, (2)AD, (3)AG, (2)AF

Row 56 (L) (1)BM, (2)BT, (4)AE, (3)Y, (1)BR, (1)F, (1)AR, (1)BT, (3)BQ, (2)M, (3)AD, (4)AG, (1)AF

Row 57 (L) (2)BM, (3)BT, (1)AE, (2)BN, (1)AE, (1)Y, (1)BR, (1)F, (1)AR, (3)BQ, (1)AB, (2)M, (3)AD, (4)AG, (1)J

Row 58 (L) (2)BM, (2)AD, (1)M, (1)BT, (3)BN, (1)AE, (1)BR, (1)F, (1)AR, (2)BQ, (2)BM, (1)AW, (1)M, (3)AD, (3)AG, (2)J

Row 59 (L) (3)BM, (1)L, (1)AD, (2)M, (1)BT, (2)BN, (2)F, (1)AR, (1)AA, (5)BM, (1)M, (3)AD, (1)AG, (3)J

Row 60 (L) (4)BM, (2)L, (2)M, (2)BQ, (1)BR, (2)AR, (8)BM, (1)AD, (2)AG, (3)J

Row 61 (L) (5)BM, (2)L, (2)M, (1)BQ, (1)F, (1)AR, (10)BM, (1)AD, (1)AG, (3)J

Row 62 (L) (22)BM, (1)BL, (1)BM, (3)J

Row 63 (L) (27)BM

Row 64 (L) (27)BM

Row 65 (L) (27)BM

Row 66 (L) (27)BM

Row 67 (L) (27)BM

Miyuki Delica 11/0 (DB)

A DB10 Black Count: 13	B DB206 Opaque Salmon Count: 33	C DB310 Matte Black Count: 2
D DB312 Matte Metallic Dark Raspberry AB Count: 1	E DB325 Matte Metallic Blue AB Count: 14	F DB340 Matte Copper Plated Count: 6
G DB353 Matte Opaque Antique Beige Count: 1	H DB378 Matte Metallic Brick Red Count: 1	I DB653 Opaque Pumpkin Count: 1
J DB661 Opaque Bright Purple Count: 15	K DB662 Opaque Mulberry Count: 13	L DB728 Opaque Mauve Count: 5
M DB800 Frosted Opaque Antique Rose Count: 26	N DB865 Matte Brown AB Count: 1	O DB872 Matte Opaque Orange AB Count: 76
P DB874 Matte Opaque Red AB Count: 4	Q DB875 Matte Opaque Mauve AB Count: 1	R DB884 Matte Opaque Dark Grey AB Count: 14
S DB1053 Matte Metallic Plum Emerald Gold AB Count: 2	T DB1054 Matte Metallic Plum Gold AB Count: 1	U DB1056 Matte Metallic Taupe Gold AB Count: 21
V DB1061 Matte Metallic Dusky Clay AB Count: 1	W DB1062 Matte Metallic Purple Sage Gold AB Count: 8	X DB1067 Matte Metallic Thistle Gold AB Count: 3
Y DB1133 Opaque Mandarin Count: 69	Z DB1163 Galvanized Matte Mead Count: 11	AA DB1165 Galvanized Matte Muscat Count: 1
AB DB1166 Galvanized Matte Pink Blush Count: 2	AC DB1167 Galvanized Matte Berry Count: 4	AD DB1173 Galvanized Matte Magenta Count: 19
AE DB1363 Opaque Salmon Count: 30	AF DB1376 Opaque Antique Rose Count: 18	AG DB1379 Opaque Red Violet Count: 19
AH DB1493 Opaque Light Salmon Count: 6	AI DB1494 Opaque Pale Rose Count: 2	AJ DB1495 Opaque Pink Champagne Count: 2

AK DB1513
Matte Opaque Light Salmon
Count: 72

AL DB1515
Matte Opaque Pink Champagne
Count: 1

AM DB1522
Matte Opaque Light Peach AB
Count: 20

AN DB1523
Matte Opaque Light Salmon AB
Count: 2

AO DB1524
Matte Opaque Pale Rose AB
Count: 70

AP DB1525
Matte Opaque Pink Champagne AB
Count: 4

AQ DB1593
Matte Opaque Mandarin AB
Count: 6

AR DB1834F
Galvanized Matte Champagne Duracoat
Count: 22

AS DB1838F
Galvanized Matte Berry Duracoat
Count: 7

AT DB1840F
Galvanized Matte Hot Pink Duracoat
Count: 6

AU DB1841F
Galvanized Matte Light Cranberry Duracoat
Count: 1

AV DB1842F
Galvanized Matte Dark Berry Duracoat
Count: 4

AW DB1906
Opaque Rosewater
Count: 14

AX DB1910
Matte Opaque Espresso
Count: 6

AY DB2033
Neon Creamsicle
Count: 35

AZ DB2034
Neon Flamingo
Count: 4

BA DB2035
Neon Wild Strawberry
Count: 22

BB DB2036
Neon Cotton Candy
Count: 4

BC DB2042
Neon Sea Coral
Count: 28

BD DB2044
Neon Guava
Count: 4

BE DB2047
Neon Bittersweet
Count: 1

BF DB2048
Neon Pink Taffy
Count: 62

BG DB2049
Neon Hot Pink
Count: 3

BH DB2050
Neon Jazzberry
Count: 15

BI DB2107
Opaque Cedar Duracoat
Count: 4

BJ DB2108
Opaque Persimmon Duracoat
Count: 8

BK DB2111
Opaque Tea Rose Duracoat
Count: 3

BL DB2112
Opaque Dark Salmon Duracoat
Count: 17

BM DB2113
Opaque Lychee Duracoat
Count: 733

BN DB2114
Opaque Light Watermelon Duracoat
Count: 14

BO DB2115
Opaque Guava Duracoat
Count: 3

BP DB2116
Opaque Light Carnation Duracoat
Count: 9

BQ DB2117
Opaque Carnation Duracoat
Count: 17

BR DB2118
Opaque Pansy Duracoat
Count: 23

BS DB2119
Opaque Jujube Duracoat
Count: 4

BT DB2137
Opaque Hydrangea Duracoat
Count: 21

BU DB2140
Opaque Anemone Duracoat
Count: 13

BV DB2143
Opaque Navy
Count: 2

BW DB2144
Opaque Cobalt
Count: 1

BX DB2275
Opaque Glazed Jujube
Count: 7

BY DB2288
Matte Opaque Glazed Sienna
Count: 4

BZ DB2292
Matte Opaque Glazed Thistle
Count: 5

CA DB2294
Matte Opaque Glazed Hydrangea
Count: 6

CB DB2295
Matte Opaque Glazed Twilight Lavender
Count: 5

CC DB2308
Matte Opaque Glazed Trillium Red AB
Count: 10

CD DB2319
Matte Opaque Glazed Navy AB
Count: 8

CE DB2321
Matte Opaque Glazed Dark Beige AB
Count: 2

CF DB2353
Opaque Cherry Blossom Duracoat
Count: 17

CG DB2354
Opaque Shanghai Red Duracoat
Count: 3

CH DB2355
Opaque Plum Berry Duracoat
Count: 11