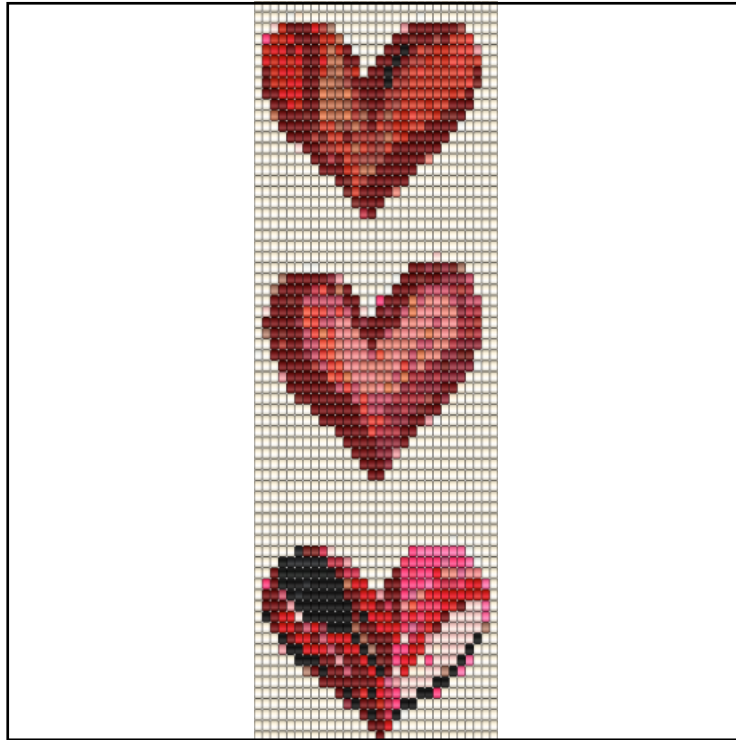


Candy Love



Type: Loom

Width: 30

Height: 68

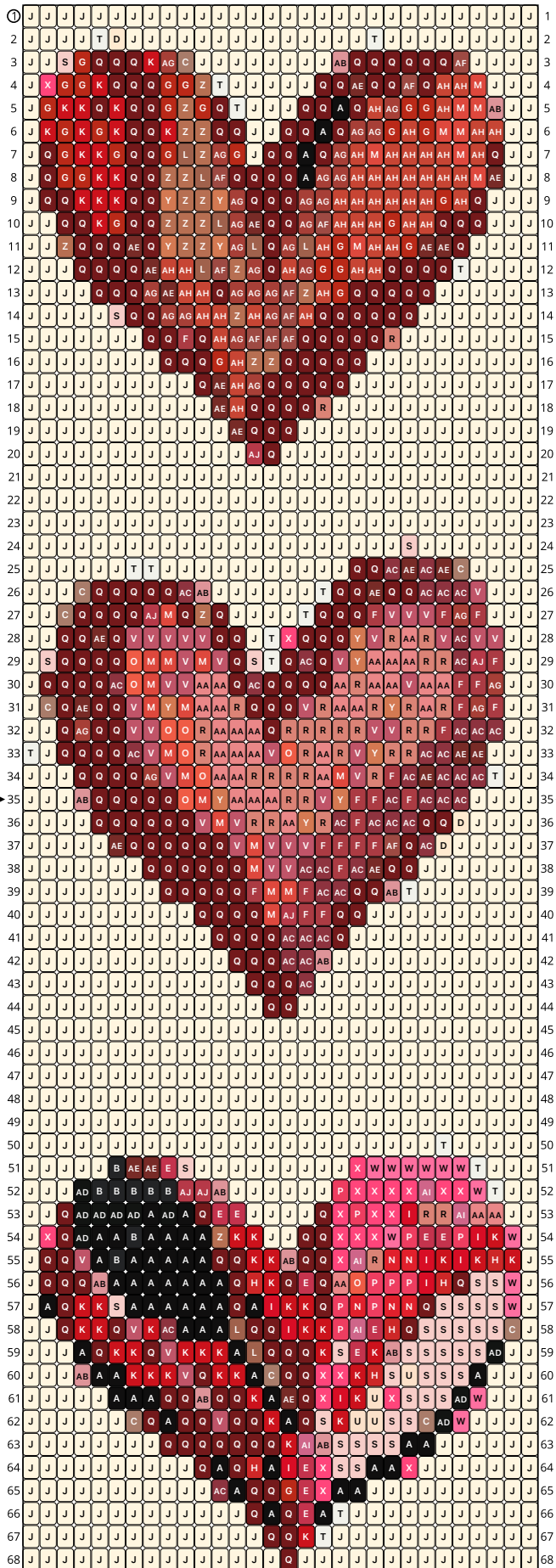
Finished size: 1.6 x 4.5"

Total beads: 2,040

© 2026 The Pixel Zone

thepixelzone.com

Loom Bead Pattern | Personal Use ONLY | NO Selling



Word Chart

Starting bead: Top Left

Row 1 (R) (30)J

Row 2 (R) (4)J, (1)T, (1)D, (14)J, (1)T, (9)J

Row 3 (R) (2)J, (1)S, (1)G, (3)Q, (1)K, (1)AG, (1)C, (8)J, (1)AB, (6)Q, (1)AF, (4)J

Row 4 (R) (1)J, (1)X, (2)G, (1)K, (3)Q, (2)G, (1)Z, (1)T, (5)J, (2)Q, (1)AE, (2)Q, (1)AF, (1)Q, (2)AH, (1)M, (3)J

Row 5 (R) (1)J, (1)G, (2)K, (1)Q, (1)K, (2)Q, (1)G, (1)Z, (1)G, (1)Q, (1)T, (3)J, (2)Q, (1)A, (1)Q, (1)AH, (1)AG, (2)G, (1)AH, (2)M, (1)AB, (2)J

Row 6 (R) (1)J, (1)K, (1)G, (1)K, (1)G, (1)K, (2)Q, (1)K, (2)Z, (2)Q, (2)J, (2)Q, (1)A, (1)Q, (2)AG, (1)G, (1)AH, (1)G, (2)M, (2)AH, (2)J

Row 7 (R) (1)J, (1)Q, (1)G, (2)K, (1)G, (2)Q, (1)G, (1)L, (1)Z, (1)AG, (1)G, (1)J, (2)Q, (1)A, (1)Q, (1)AG, (1)AH, (1)M, (4)AH, (1)M, (1)AH, (1)Q, (2)J

Row 8 (R) (1)J, (1)Q, (2)G, (2)K, (2)Q, (2)Z, (1)L, (1)AF, (4)Q, (1)A, (2)AG, (7)AH, (1)M, (1)AE, (2)J

Row 9 (R) (1)J, (2)Q, (3)K, (2)Q, (1)Y, (2)Z, (1)Y, (1)AG, (3)Q, (2)AG, (6)AH, (1)G, (1)AH, (1)Q, (3)J

Row 10 (R) (2)J, (2)Q, (1)K, (1)G, (2)Q, (3)Z, (1)L, (1)AG, (1)AE, (2)Q, (1)AG, (1)AF, (3)AH, (1)G, (2)AH, (3)Q, (3)J

Row 11 (R) (2)J, (1)Z, (3)Q, (1)AE, (1)Q, (1)Y, (2)Z, (1)Y, (1)AG, (1)L, (1)Q, (1)AG, (1)L, (1)AH, (1)G, (1)M, (2)AH, (1)G, (2)AE, (1)Q, (4)J

Row 12 (R) (3)J, (4)Q, (1)AE, (2)AH, (1)L, (1)AF, (1)Z, (1)AG, (1)Q, (1)AH, (1)AG, (2)G, (2)AH, (4)Q, (1)T, (4)J

Row 13 (R) (4)J, (3)Q, (1)AG, (1)AE, (2)AH, (1)Q, (3)AG, (1)AF, (1)Z, (1)AH, (1)G, (5)Q, (6)J

Row 14 (R) (5)J, (1)S, (2)Q, (2)AG, (2)AH, (1)Z, (1)AH, (1)AG, (1)AF, (1)AH, (6)Q, (7)J

Row 15 (R) (7)J, (2)Q, (1)F, (1)Q, (1)AH, (1)AG, (3)AF, (5)Q, (1)R, (8)J

Row 16 (R) (8)J, (3)Q, (1)G, (1)AH, (2)Z, (5)Q, (10)J

Row 17 (R) (10)J, (1)Q, (1)AE, (1)AH, (1)AG, (5)Q, (11)J

Row 18 (R) (11)J, (1)AE, (1)AH, (4)Q, (1)R, (12)J

Row 19 (R) (12)J, (1)AE, (3)Q, (14)J

Row 20 (R) (13)J, (1)AJ, (1)Q, (15)J

Row 21 (R) (30)J

Row 22 (R) (30)J

Row 23 (R) (30)J

Row 24 (R) (22)J, (1)S, (7)J

Row 25 (R) (6)J, (2)T, (11)J, (2)Q, (1)AC, (1)AE, (1)AC, (1)AE, (1)C, (4)J

Row 26 (R) (3)J, (1)C, (5)Q, (1)AC, (1)AB, (6)J, (1)T, (2)Q, (1)AE, (2)Q, (3)AC, (1)V, (3)J

Row 27 (R) (2)J, (1)C, (4)Q, (1)AJ, (1)M, (1)Q, (1)Z, (1)Q, (4)J, (1)T, (3)Q, (1)F, (3)V, (1)F, (1)AG, (1)F, (3)J

Row 28 (R) (2)J, (2)Q, (1)AE, (1)Q, (5)V, (2)Q, (1)J, (1)T, (1)X, (3)Q, (1)Y, (1)V, (1)R, (1)AA, (1)R, (1)V, (1)AC, (2)V, (2)J

Row 29 (R) (1)J, (1)S, (4)Q, (1)O, (2)M, (1)V, (1)M, (1)V, (1)Q, (1)S, (1)T, (1)Q, (1)AC, (1)Q, (1)V, (1)Y, (3)AA, (2)R, (1)AC, (1)AJ, (1)F, (2)J

Row 30 (R) (1)J, (4)Q, (1)AC, (1)O, (1)M, (2)V, (2)AA, (1)Q, (1)AC, (4)Q, (1)AA, (1)R, (2)AA, (1)V, (2)AA, (2)F, (1)AG, (2)J

Row 31 (R) (1)J, (1)C, (1)Q, (1)AE, (2)Q, (1)V, (1)M, (1)Y, (1)M, (2)AA, (1)R, (3)Q, (1)V, (1)R, (2)AA, (1)R, (1)Y, (1)R, (1)AA, (1)R, (1)F, (1)AG, (1)F, (2)J

Row 32 (R) (2)J, (1)Q, (1)AG, (2)Q, (2)V, (2)O, (1)R, (3)AA, (1)Q, (5)R, (2)V, (2)R, (1)F, (3)AC, (2)J

Row 33 (R) (1)T, (1)J, (4)Q, (1)AC, (1)V, (1)M, (1)O, (1)R, (3)AA, (1)V, (1)O, (1)R, (1)AA, (1)R, (1)V, (1)Y, (2)R, (2)AC, (2)AE, (3)J

Row 34 (R) (3)J, (4)Q, (1)AG, (1)V, (1)M, (1)O, (2)AA, (4)R, (1)AA, (1)M, (1)V, (1)R, (1)F, (1)AC, (1)AE, (3)AC, (1)T, (2)J

Row 35 (R) (3)J, (1)AB, (5)Q, (1)O, (1)M, (1)Y, (3)AA, (2)R, (1)V, (1)Y, (2)F, (1)AC, (1)F, (3)AC, (4)J

Row 36 (R) (4)J, (6)Q, (1)V, (1)M, (1)V, (2)R, (1)AA, (1)Y, (1)R, (1)AC, (1)F, (3)AC, (2)Q, (1)D, (4)J

Row 37 (R) (5)J, (1)AE, (6)Q, (1)V, (1)M, (3)V, (4)F, (1)AF, (1)Q, (1)AC, (1)D, (5)J

Row 38 (R) (7)J, (6)Q, (1)M, (2)V, (2)AC, (1)F, (1)AC, (1)AE, (2)Q, (7)J

Row 39 (R) (8)J, (5)Q, (1)F, (2)M, (1)F, (2)AC, (2)Q, (1)AB, (1)T, (7)J

Row 40 (R) (10)J, (4)Q, (1)M, (1)AJ, (2)F, (2)Q, (10)J

Row 41 (R) (11)J, (4)Q, (3)AC, (1)Q, (11)J

Row 42 (R) (12)J, (3)Q, (2)AC, (1)AB, (12)J

Row 43 (R) (13)J, (3)Q, (1)AC, (13)J

Row 44 (R) (14)J, (2)Q, (14)J

Row 45 (R) (30)J

Row 46 (R) (30)J

Row 47 (R) (30)J

Row 48 (R) (30)J

Row 49 (R) (30)J

Row 50 (R) (24)J, (1)T, (5)J

Row 51 (R) (5)J, (1)B, (2)AE, (1)E, (1)S, (9)J, (1)X, (6)W, (1)T, (3)J

Row 52 (R) (3)J, (1)AD, (5)B, (2)AJ, (1)AB, (6)J, (1)P, (4)X, (1)AI, (2)X, (1)W, (1)T, (2)J

Row 53 (R) (2)J, (1)Q, (4)AD, (1)A, (1)AD, (1)A, (1)Q, (2)E, (4)J, (1)Q, (1)X, (1)P, (2)X, (1)I, (2)R, (1)AI, (2)AA, (2)J

Row 54 (R) (1)J, (1)X, (1)Q, (1)AD, (2)A, (1)B, (4)A, (1)Z, (2)K, (2)J, (2)Q, (3)X, (1)W, (1)P, (2)E, (1)P, (1)I, (1)K, (1)W, (1)J

Row 55 (R) (1)J, (2)Q, (1)V, (1)A, (1)B, (5)A, (2)Q, (2)K, (1)AB, (2)Q, (1)X, (1)AI, (1)R, (2)N, (1)I, (1)K, (1)I, (1)K, (1)H, (1)K, (1)J

Row 56 (R) (1)J, (3)Q, (1)AB, (7)A, (1)Q, (1)H, (1)K, (1)Q, (1)E, (1)Q, (1)AA, (1)O, (3)P, (1)I, (1)H, (1)Q, (2)S, (1)W, (1)J

Row 57 (R) (1)J, (1)A, (1)Q, (2)K, (1)S, (6)A, (1)Q, (1)A, (1)I, (2)K, (1)Q, (1)P, (1)N, (1)P, (2)N, (1)Q, (4)S, (1)W, (1)J

Row 58 (R) (2)J, (1)Q, (2)K, (1)Q, (1)V, (1)K, (1)AC, (3)A, (1)L, (2)Q, (1)I, (2)K, (1)P, (1)AI, (1)E, (1)H, (1)Q, (5)S, (1)C, (1)J

Row 59 (R) (3)J, (1)A, (1)Q, (2)K, (1)Q, (1)V, (3)K, (1)A, (1)L, (3)Q, (1)K, (1)S, (1)E, (1)K, (1)AB, (5)S, (1)AD, (2)J

Row 60 (R) (3)J, (1)AB, (2)A, (3)K, (1)V, (1)Q, (2)K, (1)A, (1)C, (2)Q, (2)X, (1)K, (1)H, (1)S, (1)U, (3)S, (1)A, (3)J

Row 61 (R) (5)J, (3)A, (2)Q, (1)AB, (2)Q, (1)K, (1)A, (1)AE, (1)Q, (1)X, (1)I, (1)K, (1)U, (1)X, (3)S, (1)AD, (1)W, (3)J

Row 62 (R) (6)J, (1)C, (1)Q, (1)A, (2)Q, (1)V, (2)Q, (1)K, (1)A, (1)Q, (1)S, (1)K, (2)U, (2)S, (1)C, (1)AD, (1)W, (4)J

Row 63 (R) (8)J, (7)Q, (1)K, (1)AI, (1)AB, (4)S, (2)A, (6)J

Row 64 (R) (10)J, (1)Q, (1)A, (1)Q, (1)H, (1)A, (1)I, (1)E, (1)X, (2)S, (2)A, (1)X, (7)J

Row 65 (R) (11)J, (1)AC, (1)A, (2)Q, (1)G, (1)E, (1)X, (2)A, (10)J

Row 66 (R) (13)J, (1)Q, (1)A, (1)Q, (1)E, (1)A, (1)T, (11)J

Row 67 (R) (14)J, (2)Q, (1)K, (1)T, (12)J

Row 68 (R) (15)J, (1)Q, (14)J

Miyuki Delica 11/0 (DB)

| | | |
|--|--|---|
| A DB10 Black Count: 59 | B DB310 Matte Black Count: 8 | C DB340 Matte Copper Plated Count: 9 |
| D DB353 Matte Opaque Antique Beige Count: 3 | E DB362 Opaque Red Satin Count: 11 | F DB378 Matte Metallic Brick Red Count: 24 |
| G DB654 Opaque Maroon Count: 30 | H DB723 Opaque Red Count: 6 | I DB727 Opaque Vermillion Red Count: 9 |
| J DB762 Matte Opaque Dark Cream Count: 1,023 | K DB791 Frosted Opaque Bright Red Count: 54 | L DB794 Frosted Opaque Sienna Count: 8 |
| M DB795 Frosted Opaque Cinnabar Count: 26 | N DB796 Frosted Opaque Red Count: 5 | O DB872 Matte Opaque Orange AB Count: 9 |
| P DB873 Matte Opaque Vermillion Red AB Count: 10 | Q DB1134 Opaque Currant Count: 303 | R DB1363 Opaque Salmon Count: 38 |
| S DB1513 Matte Opaque Light Salmon Count: 40 | T DB1520 Matte Opaque Bisque White AB Count: 19 | U DB1522 Matte Opaque Light Peach AB Count: 4 |
| V DB1838F Galvanized Matte Berry Duracoat Count: 44 | W DB2035 Neon Wild Strawberry Count: 13 | X DB2051 Neon Poppy Red Count: 24 |
| Y DB2108 Opaque Persimmon Duracoat Count: 12 | Z DB2110 Opaque Toast Duracoat Count: 22 | AA DB2114 Opaque Light Watermelon Duracoat Count: 33 |
| AB DB2117 Opaque Carnation Duracoat Count: 13 | AC DB2119 Opaque Jujube Duracoat Count: 43 | AD DB2261 Black Picasso Count: 10 |
| AE DB2263 Opaque Red Picasso Count: 24 | AF DB2274 Opaque Glazed Persimmon Count: 11 | AG DB2287 Matte Opaque Glazed Persimmon Count: 31 |
| AH DB2352 Opaque Terracotta Duracoat Count: 51 | AI DB2353 Opaque Cherry Blossom Duracoat Count: 5 | AJ DB2354 Opaque Shanghai Red Duracoat Count: 6 |